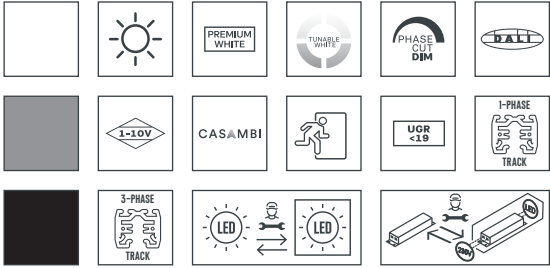
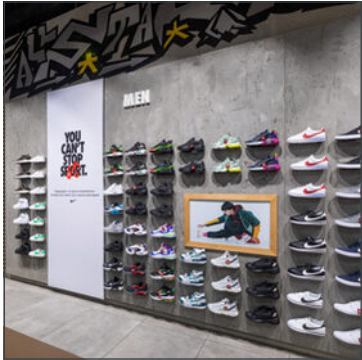
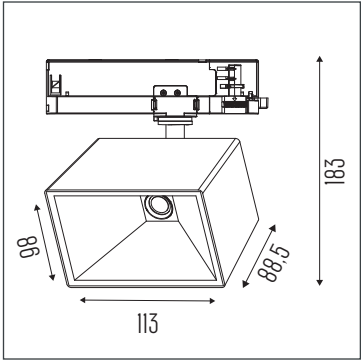


BRAGI HE.

The Bragi HE is an adjustable track luminaire with a compact design and high performance. Thanks to its smart design and the use of MIRO material in the reflector, the Bragi HE delivers unparalleled lighting quality. This ensures exceptional system efficiency and produces a beautifully uniform, rectangular light beam that perfectly illuminates both walls and ceilings.



Adjustability	: 350° rotational and 90° tiltable	Optic	: Miro Reflector 65°x45°
CCT	: 2700K, 3000K, 3500K, 4000K, 3000K PW, 3500K PW, 4500K PW	Mains voltage	: 220-240V / 50-60Hz
CRI	: max. [RA] >98	Max. ambient temperature	: 35°C
Chromaticity tolerance	: 2	Ingress protection	: IP20
Luminous flux	: max. 4200Lm	Net. weight	: 0.70Kg
Connected load	: max. 31W	Warranty	: 5 years
System efficiency	: max. 154Lm/W		
Electrical Safety Class	: Class II		



#LIGHTBUILDERS | 3D PROTOTYPING